

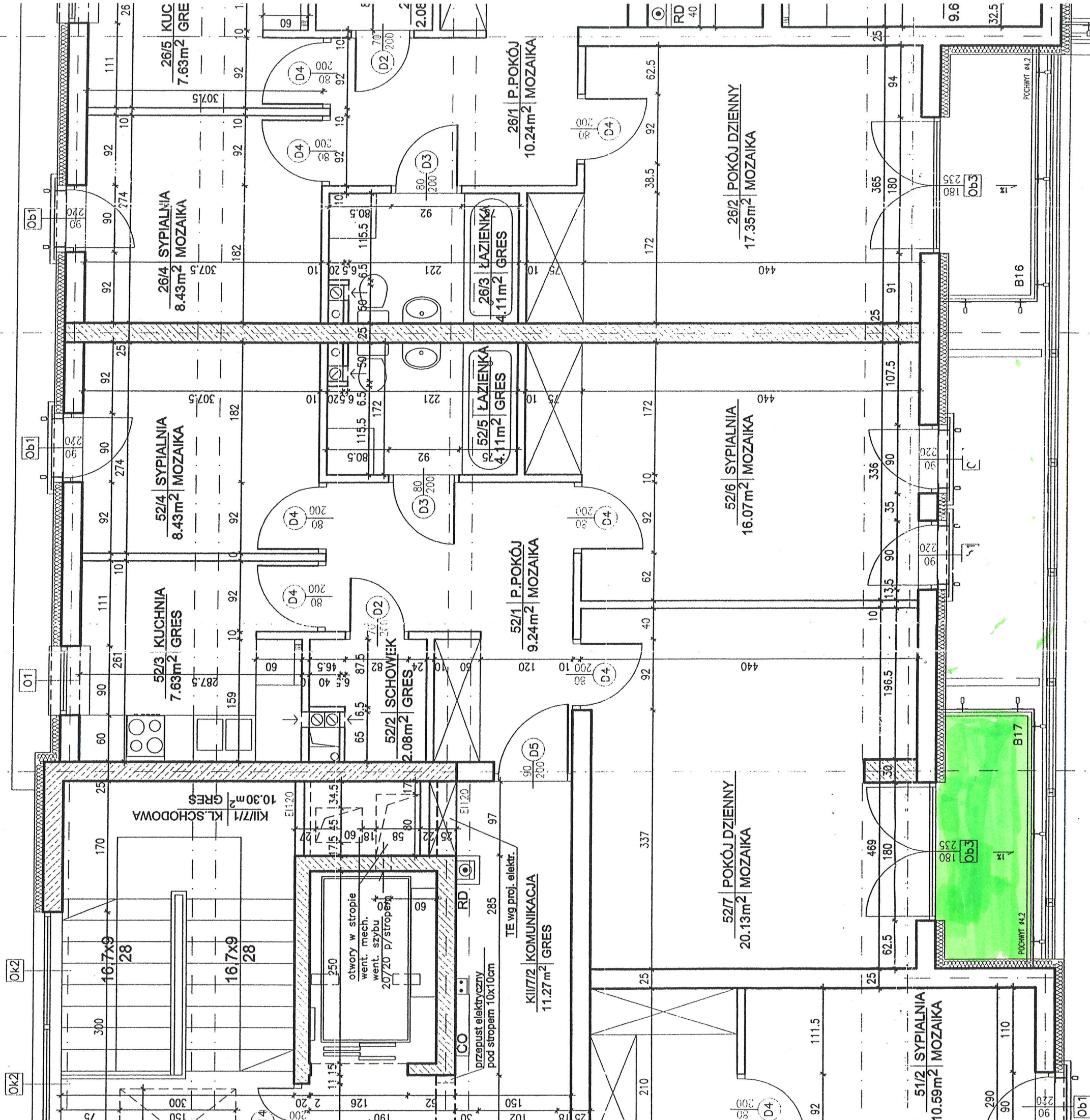
PP	PP	PU
1.94	49.95	I-IV
39/43		

1PK	PM	PP	PU
KOND	17.18	19.06	36.24
NR LOK.	7/11/15		

2PK	PM	PP	PU
KOND	31.89	24.52	56.41
NR LOK.	8/12/16		

BALKON  
ul. Sądowska 7 lok. 40





1PK	PM	PP	PU
KOND	17.18	19.06	36.24
NR LOK.	VII		
	27		

ALKON  
ul. Sądecka 7 lok. 52

2PK	PM	PP	PU
KOND	30.38	23.21	53.59
	VII		

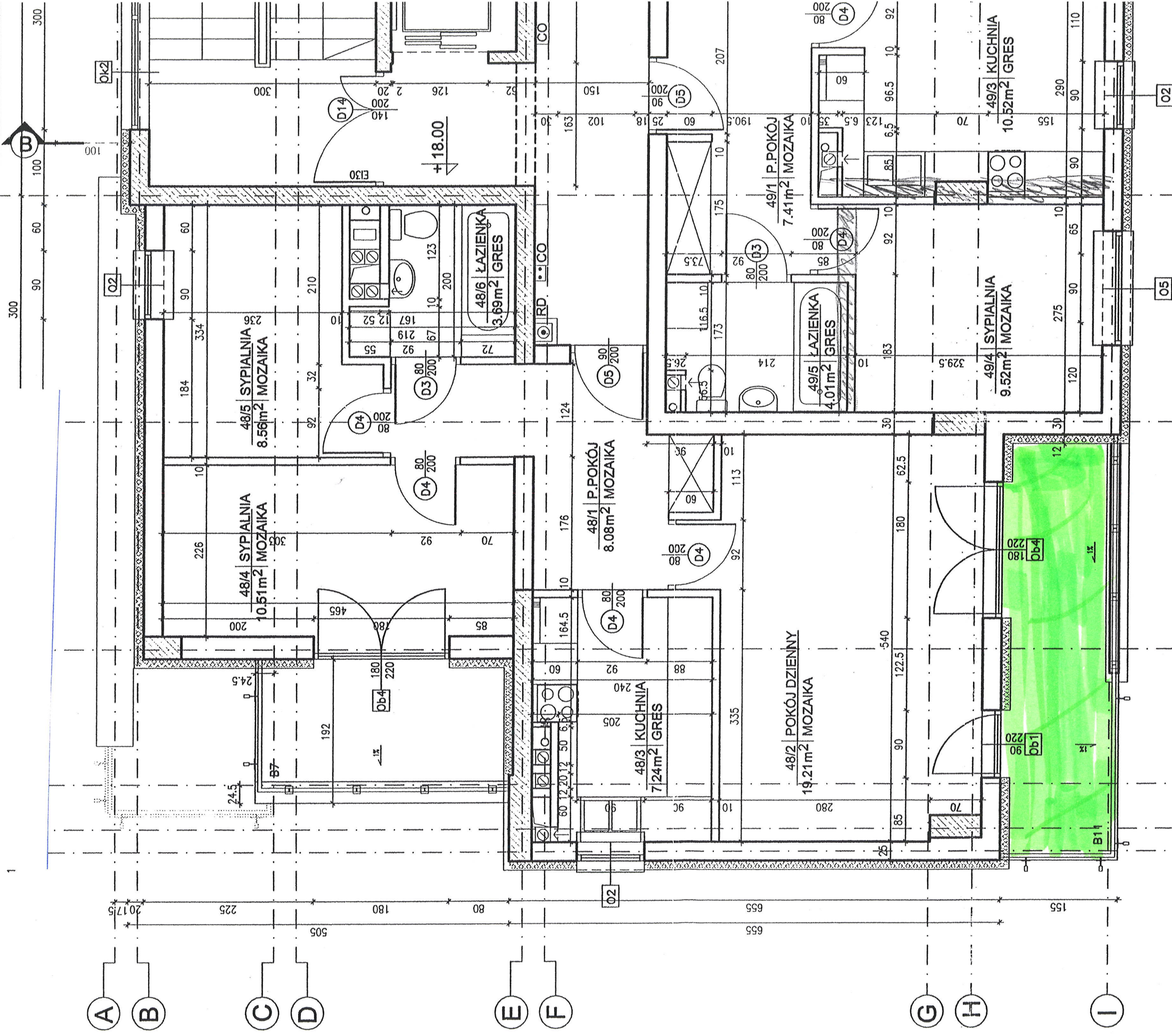


1

BALKON

ul. Sądowa 7 lok 48

6



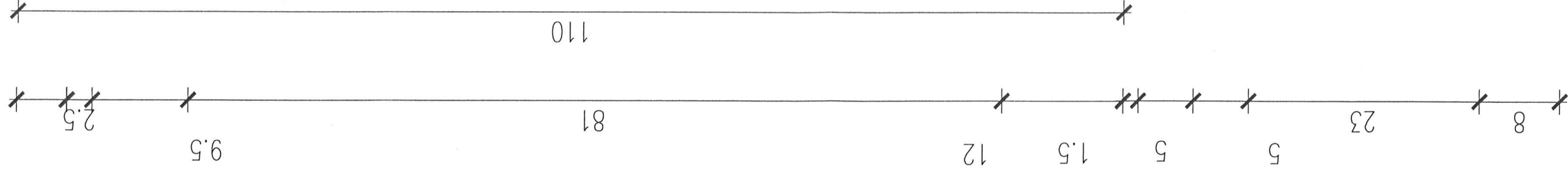
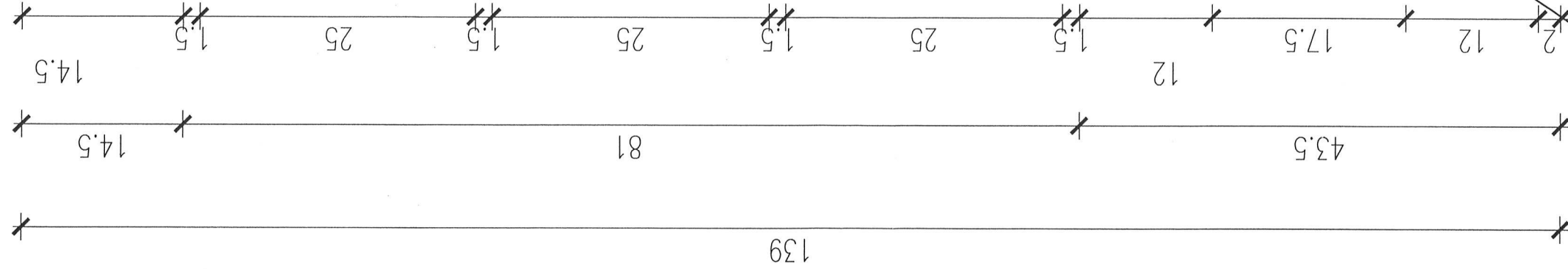
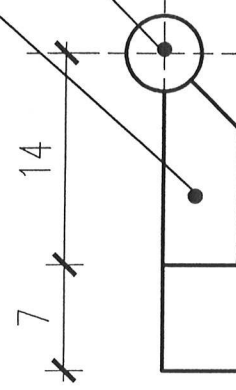
2PK	PM	PP	PU
KOND	28.01	21.94	49.94
NR LOK.	VI		49



BALCON

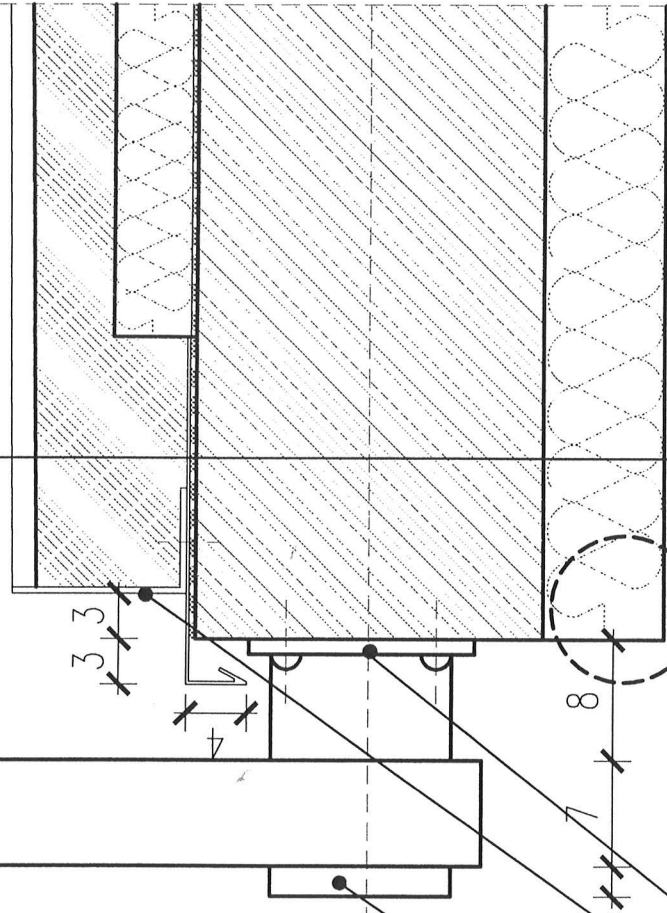


— 10x50  
pochwyt  $\varnothing 42,4 \times 4,0$



	40x70x4
	15X15
	30X30X4
	SIATKA $\varnothing 15$ mm

1,5	gres
5,5	szlichta
5,0	styrodur
0,4	2x papa zgrzewalna
23,0	plyta żelbetowa
8,0	styropian



— 10x120  
kątownik 70x120x4  
marka-strop

detail systemowy

